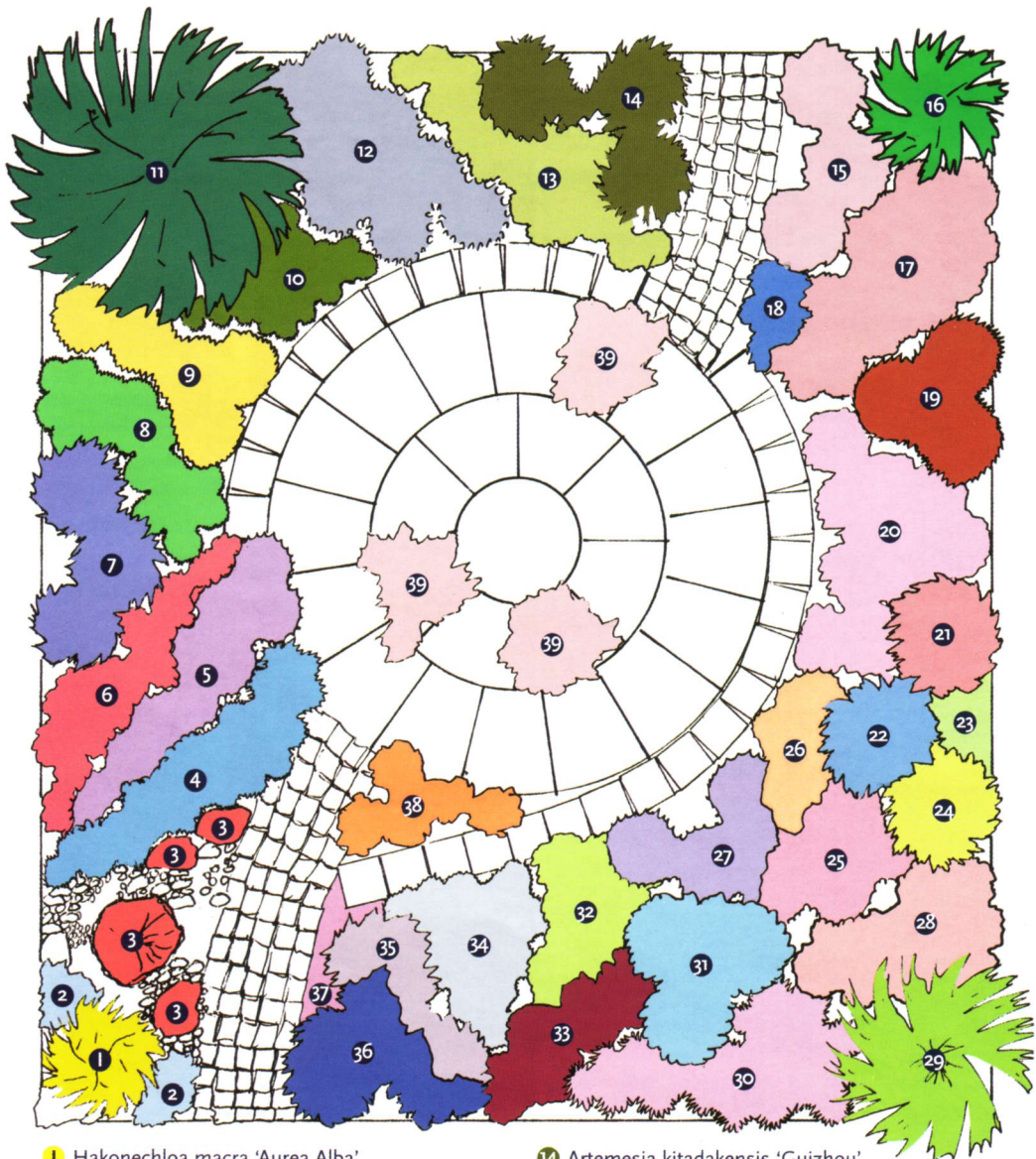




**CINZANO®**

GARDEN

ROSE



- |  |   |
|--|---|
| <b>1</b> Hakonechloa macra 'Aurea Alba'                  | <b>14</b> Artemisia kitadakensis 'Guizhou'  |
| <b>2</b> Festuca glauca 'Elijah Blue'                    | <b>15</b> Penstemon 'Apple Blossom'         |
| <b>3</b> Uncinia rubra                                   | <b>16</b> Juniperus scopulorum 'Skyrocket'  |
| <b>4</b> Tradescantia 'Blue and Gold'                    | <b>17</b> Lysimachia ephemerum              |
| <b>5</b> Origanum laevigatum 'Herrenhausen' <b>C</b>     | <b>18</b> Gentiana septemfida <b>C</b>      |
| <b>6</b> Dahlia 'Bednall Beauty'                         | <b>19</b> Achillea 'Fanal' <b>C</b>         |
| <b>7</b> Delphinium 'King Arthur'                        | <b>20</b> Phlox paniculata 'Norah Leigh'    |
| <b>7</b> Delphinium 'Black Knight'                       | <b>21</b> Thalictrum aquilegifolium         |
| <b>8</b> Nicotiana species                               | <b>22</b> Salvia patens 'Cambridge Blue'    |
| <b>9</b> Achillea filipendulina 'Cloth of gold' <b>C</b> | <b>23</b> Tierella wherryii                 |
| <b>10</b> Dryopteris felix-mas                           | <b>24</b> Coreopsis verticillata 'Moonbeam' |
| <b>11</b> Cinnamomum camphora (in pot) <b>C</b>          | <b>25</b> Verbascum 'Pink Domino'           |
| <b>12</b> Geranium thurstonianum                         | <b>26</b> Achillea 'Terracotta' <b>C</b>    |
| <b>13</b> L. longiflora                                  | <b>27</b> Monarda 'Loddon Crown'            |

The garden has been designed with pleasure in mind – both in the wonderful array of plants and the interplay between them and the hard landscaping that uses traditional materials with a contemporary twist.

Access is through a simple but elegant metal gate. The curved brick path invites entry to the garden and leads to the central circular patio. Furnished with a small table and chairs, the ideal place to sit and enjoy a cool, refreshing Cinzano. A further brick path completes the journey to the front door.

Bisecting the paths, the circular wall that encompasses the patio leads the eye around and down a graceful slope, finally pointing towards the obelisk and grass garden.

Boundary fencing complements the gate and is both practical and secure.

A restricted palette of mostly pinks, mauves and purples has been chosen for the planting – mostly herbaceous with a cottage feel. Certain accents have also been included to provide contrasts and impact. The use of specimen trees in containers provides height and a touch of the exotic with inclusion of *Cinnamom camphora*.

Plants used in the production of Cinzano are also featured and fit very well into the overall scheme for the garden.

28 *Gaura lindheimeri* 'Crimson Butterfly'


29 *Acer dissectum*

30 *Erigeron glaucus*

31 *Hosta* 'Sum and Sunstance'

32 *Euphorbia amygdaloides* 'Purpurea'

33 *Astrantia major* 'Hadspen Blood'

34 *Artemisia* 'Powis Castle' 


35 *Heuchera* 'Amethyst Mist'

36 *Lavendula angustifolia* 'Hidcote'

37 *Geranium* 'Bertie Krug'

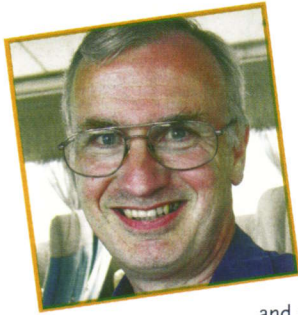
38 *Calendula* 'Calypso Mixed'

39 *Thymus caespitius* 

39 *Thymus xcitriodorus* 'Silver Queen' 

Plants marked  are of the same Genus as those used to flavour Cinzano





**Reg Wadie** RHS Cert Horticulture, Diploma in Garden Design. Designer

Qualified at Brinsbury College and a double RHS Silver

medal winner, Reg offers exclusive designs to transform any garden, courtyard or border.

Flowers, foliage and hard landscaping all play a vital role in today's gardens and the relationships between them can provide a wonderful mix of colours and textures.

The use of bold planting schemes and modern materials is of particular interest, where the combination of contemporary and traditional are fused together to produce attractive, practical environments (07745 094 985).



**Robert Hewitt** Construction

Established in 1985, Robert Hewitt specializes in all aspects of domestic landscaping. Formal

training was carried out at West Sussex & Sparsholt Colleges of Horticulture. Industry involvement with the British Association of Landscape Industries has encouraged continuing professional development. Clients garden projects are carried out to a high standard, as recent awards for excellence include a BALI Award, Two Sussex Heritage Trust Awards and a RHS Silver medal in 2003 (01403 255 464).

**Paving supplied by:** Westmister Stone - importers of natural stone, manufacturers of nationally distributed, high quality paving since 1985. Raising the standard in traditional flags (01978 710 685).

**Bricks supplied by:** The Brick Business Ltd - the UK's leading independent brick manufacturer. We make the bricks that make garden features special (0161 488 4351).

**Ready mix mortar supplied by:** Natural Cement Distribution Ltd - Suppliers of high quality fast setting mortars, Natcem35 is ideal for brickwork and paving, ponds and water features and contains no free lime after setting (01226 299333).

**Fencing supplied by:** Jackson's Fine Fencing - established 1947, manufacturers of high quality timber and metal fencing and gates (01233 750 393).

**Plants supplied by:** Prenplants - hardy perennial specialist (01403 822 437).

**Stone monolith supplied by:** Silverlands Stone - Landscape centres supplying hard landscape materials (01932 570 094).

**Lead Urns supplied by:** SCM leadwork - handmade lead urns and planters (01769 540 157).

